



SASKATOON GELBIEH

Bull & Female Sale

Friday, MARCH 22, 2013
1pm - SASKATOON LIVESTOCK SALES, SASKATOON SASKATCHEWAN

www.gelbviehworld.com

13th Annual

SASKATOON GELBIEH

Friday, MARCH 22, 2013 1pm Bull & Female Sale

SASKATOON LIVESTOCK SALES, SASKATOON SASKATCHEWAN

Saskatoon Livestock Sales is located 10 km west of Saskatoon on Highway #14 (towards Biggar).

Offering...

52 Yearling Gelbvieh Herd Sire Prospects
11 Purebred Open Heifers

• All bulls have been semen tested

ANGUS & MARLENE DAVIDSON
and **WADE & RUTHIE DAVIDSON**

Box 385, Ponteix, SK S0N 1Z0
306/785-4512

Email: davidson421@yahoo.ca

STONE GATE FARM

Darrell & Leila Hickman

RR #2, Vermilion, AB T9X 1Y7

780/581-0077 or 780/581-4510

Email: darrell.hickman@lakelandcollege.ca



www.gelbviehworld.com

FIR RIVER LIVESTOCK

Darcy & Renee Hrebenuik

Ph: 306/865-2929 Cell: 306/865-7859

and David Hrebenuik

Ph: 306/865-6603

Box 379, Hudson Bay, SK S0E 0Y0

Email: firriver@explornet.com



Stone Gate Farm
www.stonegatefarms.ca

Canadian Gelbvieh Assoc.
Breed Average EPD's

| CE | BW | WW | YW | MLK | CED |
|-----|-----|------|------|------|-----|
| 7.6 | 2.0 | 65.2 | 91.2 | 26.1 | 5.5 |

Special
Representatives:

Don Oberg - Ring Service

Bob Blacklock - Ring Service

Welcome...

Welcome to the 13th Annual Edition of the Saskatoon Gelbvieh Bull and Female Sale! We would like to sincerely thank all of our past customers, buyers, and bidders for your support over the years.

On offer this year is an outstanding group of yearling bulls, and a select group of purebred open heifers. As consignors we pay careful attention to the quality and soundness of the cattle we are offering for sale, so you can buy with confidence. Whether you need a bull that will sire scale busting calves, or that bull to breed your heifers we are confident we have it. Feel free anytime to contact us with any of your questions. All bulls will be semen tested and vet inspected prior to the sale. Please feel free to preview the bulls at each of our ranches anytime. You are also welcome to join us for some hospitality and view our bulls the day before the sale on March 21, 2013 at Saskatoon Livestock Sales.

The Saskatoon Gelbvieh Bull & Female Sale Consignors



Darcy, Renee, Colt & Kenzie Hrebenuik



Dave Hrebenuik



Wade & Ruthie Davidson



Angus & Marlene Davidson



Darrell, Leila & Family

Sale day **403.803.4434** (Don) **306.865.7859** (Darcy)
phones: **306.625.7820** (Wade) **780.581.4510** (Darrell)
306.382.8088 (Saskatoon Livestock Sales)

Accommodations: Best Western Blairmore Super 8
Saskatoon, SK **306.242.2299** Saskatoon, SK **306.384.8989**
Reservations by March 16th under the Saskatoon Gelbvieh Bull and Female Sale.
Reservations by February 22 under the Saskatoon Gelbvieh Bull and Female Sale.

General Information:

TERMS OF SALE: Are cash or cheque at par, payable to the clerks of the Sale on sale day. U S funds will be accepted at the current rate of exchange. No release will be given until satisfactory settlement has been made. Full payment shall constitute a final sale and then registration papers will be transferred.

HEALTH: All Sale cattle meet the Canadian Health standards. Foreign buyers are responsible for knowing the current Health standards of their country.

GUARANTEE: All Sale cattle are guaranteed under the terms and conditions of Sale as recommended by the Canadian Gelbvieh Association.

MAIL BIDS: If you are unable to attend the Sale, but wish to make a purchase, please feel free to contact any of the Sales Staff or Don Savage Auctions and your order will be handled in a professional manner.

INSURANCE: Ownership commences to the purchaser as soon as the animal is sold. Insurance agents will be present sale day to look after your insurance requirements.

We would suggest you buy full mortality and fertility insurance for your new bull. A fertile bull can lose the ability to settle cattle therefore, good management of your breeding bulls over all health is very important especially throughout the breeding season. Our warranties do not cover bull injuries or sickness not apparent on sale day.

Although every precaution will be taken to protect the safety and comfort of the buyers neither Don Savage Auctions or the consignors assume any responsibility in these matters and disclaims any liability, legal or otherwise, in the event of an accident or loss of property.

**To view and
request the
video of the
bulls go to**

www.gelbviehworld.com


108 Flett Drive, Airdrie, Alberta T4B 1N2
Phone: 403/948-3520 Fax: 403/948-2917
www.donsavageauctions.com
email: don@donsavageauctions.com

Welcome to the 13th Annual Saskatoon Gelbvieh Bull and Female Sale. The last year and a half has been what we have waited for in the beef industry. With the low supply of beef in the world markets, our product will be in high demand for years and an ever increasing population is a plus for our industry. It is a great time to be in the cattle business.

The Hrebeniuks, Davidsons and Hickmans are raising top quality seedstock genetics that do well in all facets of the industry and select their best to sell in Saskatoon. You can be assured that the bulls selling will sire calves that will meet your demands. The high dollar calves that will be sought after in the market place.

Please take the opportunity to visit with these folks prior to the sale. Be sure to visit www.gelbviehworld.com or www.donsavageauctions.com for more information.

If you are interested in purchasing bulls or females on March 22nd, but are unable to be with us sale day, please contact me and your order will be handled in a professional manner.

Yours truly,

Don Savage



Please visit our website at www.gelbviehworld.com or download it at www.donsavageauctions.com

FRL FIR RIVER TIM 657Z :: LOT 1



FRL FIR RIVER TIM 657Z

POLLED :: PUREBRED 94% :: BULL :: RED :: TWIN
 JANUARY 25, 2012 :: FRL657Z :: CDGV148090

Here is a stylish, long bodied, deep sided, sound and correct bull. 657 will put eye appeal, performance, and maternal traits into any cow herd. He is out of the cow FRL46S, the cornerstone of our program, and SLC512T a bull truly at the top of the breed right now. 657 was born a twin to a bull. Don't past this one up. Bulls like this don't come along every day. Retaining 50% semen interest.

SLC MASTERPLAN 512T

FRL FIR RIVER SURI 46S

SLC MASTER PLAN 134N
 SLC MISS BLACK LASS 120H
 SLC FREEDOM 178F ET
 TSSC TWIN STAR NARITA 437N

| CE | BW | WW | YW | MLK | TM | CED | BW | ADJ WW | ADJ YW |
|----|-----|----|----|-----|----|-----|----|--------|--------|
| 9 | 2.1 | 63 | 88 | 29 | 60 | 9 | 80 | 728 | 1243 |

LOT 1

FRL FIR RIVER BENN 601Z :: LOT 2



FRL FIR RIVER BENN 601Z

POLLED :: PUREBRED 94% :: BULL :: RED
 JANUARY 2, 2012 :: FRL601Z :: CDGV148076

| CE | BW | WW | YW | MLK | TM | CED | BW | ADJ WW | ADJ YW |
|----|-----|----|-----|-----|----|-----|----|--------|--------|
| 6 | 3.2 | 71 | 104 | 29 | 65 | 3 | 83 | 778 | 1197 |

EGL PABST L011 ET

JCGR BAR GT PARADIGM 2H ET
 EGL PHOEBE G374

FRL FIR RIVER MISS PETE 7W

RID R COLLATERAL 2R
 DVE DAVIDSON PETERBILT 7N

601 is a stout, deep sided, high gaining bull. He will produce those heavy gaining calves that we all want. We have a sold a lot of Pabst bulls over the years. Why? Because they flat out work.

2

FRL FIR RIVER KASSIAN 626Z :: LOT 3



FRL FIR RIVER KASSIAN 626Z

POLLED :: PUREBRED 94% :: BULL :: RED
 JANUARY 18, 2012 :: FRL626Z :: CDGV148096

| CE | BW | WW | YW | MLK | TM | CED | BW | ADJ WW | ADJ YW |
|----|-----|----|----|-----|----|-----|----|--------|--------|
| 9 | 1.6 | 54 | 76 | 18 | 45 | -2 | 88 | 681 | 1228 |

JRI TOP RECRUIT 254U82

JRI TOP SECRET 253M75 ET
 JRI MS COCOA 254S72

FRL FIR RIVER AUGUST 257X

DVE DAVIDSON COGNAC 11N
 DVE DAVIDSON MS BEUTI 38M

Real thick easy fleshing type bull. Out of a first calver, you sure have to appreciate the job she did. A Top Recruit son won Denver this past year.

3



FRL FIR RIVER RONNY 652Z :: LOT 4

FRL FIR RIVER RONNY 652Z

POLLED :: PUREBRED 94% :: BULL :: RED
JANUARY 24, 2012 :: FRL652Z :: CDGV148086

Here is a powerful, deep sided, super stout feature red bull. 652 will give you those great haired dark red calves. If we had not retained the Rig Rocker son last year, this guy wouldn't be leaving the ranch. Retaining 50% semen interest.

MGF RIG ROCKER 79U

VCR MS PLD VALE TWIN 19T

FRL FIR RIVER LEGACY 64R ET
MGF GIZ'S MISS KANADA 2K ET
DCC RIKHARDS RED 22R
TMR GEMINI 7P

| CE | BW | WW | YW | MLK | TM | CED | BW | ADJ WW | ADJ YW |
|----|-----|----|----|-----|----|-----|----|--------|--------|
| 4 | 3.7 | 63 | 92 | 30 | 62 | 6 | 94 | 731 | 1321 |

4



FRL FIR RIVER HOLMAN 627Z :: LOT 5



FRL FIR RIVER PABST 632Z :: LOT 6

FRL FIR RIVER HOLMAN 627Z

POLLED :: PUREBRED 94% :: BULL :: RED
JANUARY 19, 2012 :: FRL627Z :: CDGV148094

| CE | BW | WW | YW | MLK | TM | CED | BW | ADJ WW | ADJ YW |
|----|------|----|----|-----|----|-----|----|--------|--------|
| 11 | -0.1 | 51 | 67 | 32 | 58 | 6 | 89 | 729 | 1276 |

LTC RIDGE STAR HOLMAN 123H

ATC GOLD STAR POLLED 5D
RTN MISS UNA 38U
OHF RED ROCK 3R
RJD 38M'S SAPHO 223S

RJD 223S'S WILLOW 65W

627 is a big topped, square hipped type bull. His dam is a model cow. We retained this bulls half brother last year for our own use.

5

FRL FIR RIVER PABST 632Z

POLLED :: PUREBRED 94% :: BULL :: RED
JANUARY 20, 2012 :: FRL632Z :: CDGV148078

| CE | BW | WW | YW | MLK | TM | CED | BW | ADJ WW | ADJ YW |
|----|-----|----|-----|-----|----|-----|----|--------|--------|
| 7 | 2.7 | 72 | 103 | 30 | 66 | 8 | 90 | 709 | 1138 |

EGL PABST L011 ET

JCGR BAR GT PARADIGM 2H ET
EGL PHOEBE G374

VV UNWRITTEN POEM 143U

VCR SIX PACK 25S
CVF CREST VIEW RORY 88R

Stout made, wide topped bull. Dam is a front pasture type cow.

6

FRL FIR RIVER REDICK 608Z :: LOT 7



FRL FIR RIVER REDICK 608Z

POLLED :: PUREBRED 94% :: BULL :: RED
JANUARY 16, 2012 :: FRL608Z :: CDGV148077

Stout made, big hipped, lots of performance. This guys calves will really grow.

EGL PABST L011 ET

FRL FIR RIVER SIDNEY 67S

JCGR BAR GT PARADIGM 2H ET
EGL PHOEBE G374
TSSC TWIN STAR MATRIX 227M ET
TSSC TWIN STAR MISS KATE 524K

| CE | BW | WW | YW | MLK | TM | CED | BW | ADJ WW | ADJ YW |
|----|-----|----|----|-----|----|-----|----|--------|--------|
| 7 | 2.5 | 59 | 88 | 26 | 56 | 6 | 85 | 680 | 1206 |

7

FRL FIR RIVER SUTTON 650Z :: LOT 8



FRL FIR RIVER SUTTON 650Z

POLLED :: PUREBRED 94% :: BULL :: RED
JANUARY 30, 2012 :: FRL650Z :: CDGV148085

| CE | BW | WW | YW | MLK | TM | CED | BW | ADJ WW | ADJ YW |
|----|-----|----|-----|-----|----|-----|----|--------|--------|
| 6 | 4.0 | 69 | 100 | 28 | 62 | 4 | 95 | 716 | 1286 |

EGL PABST L011 ET

FRL CHERRY JUBILEE 43S

Deep sided, long bodies, square hipped bull.

JCGR BAR GT PARADIGM 2H ET
EGL PHOEBE G374
JCGR BAR GT LOUIE 2J
OHF PLD JADE 14N

8

FRL FIR RIVER DELMON 651Z :: LOT 9



FRL FIR RIVER DELMON 651Z

POLLED :: PUREBRED 94% :: BULL :: RED
JANUARY 24, 2012 :: FRL651Z :: CDGV148086

| CE | BW | WW | YW | MLK | TM | CED | BW | ADJ WW | ADJ YW |
|----|-----|----|----|-----|----|-----|----|--------|--------|
| 5 | 4.9 | 62 | 90 | 26 | 57 | 0 | 97 | 693 | 1165 |

RID R COLLATERAL 2R

FRL FIR RIVER LEXI 71U

Long spine, great haired bull. Look to this bull to produce you those real good replacement females.

JCGR BAR GT FLASHBACK 410M ET
JCGR BAR GT LONI 27N ET
FRL FIR RIVER SANTANA 62S
SPG SUNNY PLAIN LEXUS 44L

9



FRL FIR RIVER LUCAS 676Z :: LOT 10

FRL FIR RIVER LUCAS 676Z

POLLED :: PUREBRED 94% :: BULL :: RED
FEBRUARY 15, 2012 :: FRL676Z :: CDGV147315

Super stout, good performance, long bodied, deep sided, and lots of maternal in his pedigree. The 26P cow never misses. She is consistent and very productive. We retained her last years calf, so this is the only reason this guy is up for sale. Showed this guy at agribition this past fall. Really like this bull, and I'm sure you will too! Retaining 50% semen interest.

SLC MASTERPLAN 512T

DVE DAVIDSON MISS JIM 26P

SLC MASTER PLAN 134N
SLC MISS BLACK LASS 120H
DVE DAVIDSON PLD BLK JIM 6L
DVE DAVIDSON MS MONTANA 18L

| CE | BW | WW | YW | MLK | TM | CED | BW | ADJ WW | ADJ YW |
|----|-----|----|----|-----|----|-----|----|--------|--------|
| 7 | 2.5 | 57 | 67 | 34 | 63 | 3 | 90 | 793 | 1308 |

10



FRL FIR RIVER JAKE 655Z :: LOT 11



FRL FIR RIVER HUGH 660Z :: LOT 12

FRL FIR RIVER JAKE 655Z

POLLED :: PUREBRED 94% :: BULL :: RED
JANUARY 25, 2012 :: FRL655Z :: CDGV148088

| CE | BW | WW | YW | MLK | TM | CED | BW | ADJ WW | ADJ YW |
|----|-----|----|----|-----|----|-----|----|--------|--------|
| 6 | 3.1 | 55 | 75 | 27 | 54 | -3 | 89 | 626 | 1066 |

JRI FULLY EXPOSED 270N83

JRI EXTRA EXPOSURE 285L71 ET
JRI MS LIFESAVER 270K73

DVE DAVIDSON MS REBA 96M

JRI PLD PETERBILT 285H65 ET
DVE DAVIDSON'S REBA 48Z

Moderate framed, great haired bull. 655 is another excellent solid made Fully Exposed son.

11

FRL FIR RIVER HUGH 660Z

SCURRED :: PUREBRED 94% :: BULL :: RED
JANUARY 27, 2012 :: FRL660Z :: CDGV147317

| CE | BW | WW | YW | MLK | TM | CED | BW | ADJ WW | ADJ YW |
|----|-----|----|-----|-----|----|-----|----|--------|--------|
| 5 | 5.4 | 82 | 112 | 25 | 66 | 0 | 99 | 812 | 1338 |

EGL PABST L011 ET

JCGR BAR GT PARADIGM 2H ET
EGL PHOEBE G374

FRL FIR RIVER TILEY 89T

VV RALLY LOU 16R
AR MAGGIE 46M

Powerful and deep and super sound. His dam is a model cow in our herd. Showed this guy at agribition this fall.

12

FRL FIR RIVER TICKLE 656Z :: LOT 13



FRL FIR RIVER TICKLE 656Z

POLLED :: PUREBRED 94% :: BULL :: RED :: TWIN
 JANUARY 25, 2012 :: FRL656Z :: CDGV148089

Long spined, deep ribbed bull. Look to this bull to add style to your calves.

SLC MASTERPLAN 512T

FRL FIR RIVER SURI 46S

SLC MASTER PLAN 134N
 SLC MISS BLACK LASS 120H
 SLC FREEDOM 178F ET
 TSCC TWIN STAR NARITA 437N

| CE | BW | VV | YW | MLK | TM | CED | BW | ADJ WW | ADJ YW |
|----|-----|----|----|-----|----|-----|----|--------|--------|
| 9 | 2.1 | 63 | 88 | 29 | 60 | 9 | 80 | 642 | 1168 |

13

FRL FIR RIVER PABST 670Z :: LOT 14



FRL FIR RIVER PABST 670Z

POLLED :: PUREBRED 94% :: BULL :: RED
 FEBRUARY 9, 2012 :: FRL670Z :: CDGV148075

| CE | BW | VV | YW | MLK | TM | CED | BW | ADJ WW | ADJ YW |
|----|-----|----|-----|-----|----|-----|----|--------|--------|
| 6 | 4.7 | 69 | 109 | 25 | 60 | -1 | 99 | 689 | 1302 |

EGL PABST L011 ET JCGR BAR GT PARADIGM 2H ET
 EGL PHOEBE G374
DVE DAVIDSON MS DAZZLE 24S CCF GREAT LAKES DAZZLE HER
 DVE DAVIDSON PLD MISSY 62M
 Another good Pabst son. Long spined and deep sided.

14

FRL FIR RIVER BLACK EARL 695Z :: LOT 15



FRL FIR RIVER BLACK EARL 695Z

POLLED :: PUREBRED 94% :: BULL :: BLACK
 FEBRUARY 20, 2012 :: FRL695Z :: CDGV148108

| CE | BW | VV | YW | MLK | TM | CED | BW | ADJ WW | ADJ YW |
|----|-----|----|----|-----|----|-----|----|--------|--------|
| 4 | 3.8 | 47 | 68 | 43 | 69 | 1 | 98 | 672 | 1274 |

DVE DAVIDSON PLD EARL 17U DVE DAVIDSON PLD MARK 194P
 DVE DAVIDSON MS PLD JIM 59S
SLC LADY 39P VG VALLEY BLACKJACK JR 37H
 SLC LADY 109J
 Correct made, great haired, backed by a real nice mama cow.

15



FRL FIR RIVER EARL 694Z :: LOT 16

FRL FIR RIVER EARL 694Z

POLLED :: PUREBRED 94% :: BULL :: RED
FEBRUARY 20, 2012 :: FRL694Z :: CDGV148107

Super deep and thick with a great growth spread. This bull will sire those awesome scale busting calves.

DVE DAVIDSON PLD EARL 17U

VV URBAN MUSIC 151U

DVE DAVIDSON PLD MARK 194P
DVE DAVIDSON MS PLD JIM 59S
SBR 2085L MARCUS P13
VV MUSIC FESTIVAL 92P

| CE | BW | WW | YW | MLK | TM | CED | BW | ADJ WW | ADJ YW |
|----|-----|----|----|-----|----|-----|----|--------|--------|
| 7 | 2.9 | 59 | 90 | 44 | 75 | 3 | 99 | 718 | 1298 |

16



FRL FIR RIVER RICK 624Z :: LOT 17



FRL FIR RIVER JET 719Z :: LOT 18

FRL FIR RIVER RICK 624Z

POLLED :: PERCENTAGE 63% :: BULL :: RED
JANUARY 18, 2012 :: FRL624Z :: CDGV148110

| CE | BW | WW | YW | MLK | TM | CED | BW | ADJ WW | ADJ YW |
|----|-----|----|----|-----|----|-----|----|--------|--------|
| 4 | 3.8 | 38 | 63 | 31 | 50 | 1 | 85 | 626 | 1179 |

ZTM MCCOY 26G INTRIGUE 27J

DVE DAVIDSON RED WRAP 26G
DGA MVF SAMANTHA 87D
YY RED YY RAMBLER 322N
ATC GOLD STAR 259G

ULL MS RED STAR 11W

Extremely long bodied, square hiped bull. This guy will really put stretch into his calves.

17

FRL FIR RIVER JET 719Z

POLLED :: PUREBRED 94% :: BULL :: RED
MARCH 10, 2012 :: FRL719Z :: CDGV148109

| CE | BW | WW | YW | MLK | TM | CED | BW | ADJ WW | ADJ YW |
|----|-----|----|----|-----|----|-----|----|--------|--------|
| 5 | 3.8 | 59 | 97 | 48 | 81 | 1 | 90 | 691 | 1238 |

DVE DAVIDSON PLD EARL 17U

FRL FIR RIVER VIXEN 27W ET

DVE DAVIDSON PLD MARK 194P
DVE DAVIDSON MS PLD JIM 59S
JRI FULLY EXPOSED 270N83
TSCC TWIN STAR NARITA 437N

Great haired, deep sided, long bodied stylish bull. This bull has a great growth spread and is out of a really good cow family.

18

FRL FIR RIVER MASTER 679Z :: LOT 19



FRL FIR RIVER MASTER 679Z

POLLED :: PUREBRED 94% :: BULL :: RED
 FEBRUARY 7, 2012 :: FRL679Z :: CDGV148106

A real moderate thick easy fleshing bull. Really like this guys mama, a typical fully exposed daughter, she also happens to be a sister to the great Rickard's Red bull.

SLC MASTERPLAN 512T

FRL FIR RIVER WRENNA 14W ET

SLC MASTER PLAN 134N
 SLC MISS BLACK LASS 120H
 JRI FULLY EXPOSED 270N83
 LEF PLD LILLIAN 8N

| CE | BW | WW | YW | MLK | TM | CED | BW | ADJ WW | ADJ YW |
|----|-----|----|----|-----|----|-----|----|--------|--------|
| 8 | 2.6 | 52 | 79 | 31 | 59 | 3 | 85 | 685 | 1181 |

19

FRL FIR RIVER MANNING 722Z :: LOT 20



FRL FIR RIVER MANNING 722Z

POLLED :: PUREBRED 94% :: BULL :: RED
 MARCH 11, 2012 :: FRL722Z :: CDGV148093

| CE | BW | WW | YW | MLK | TM | CED | BW | ADJ WW | ADJ YW |
|----|-----|----|----|-----|----|-----|----|--------|--------|
| 9 | 0.3 | 55 | 76 | 25 | 53 | 7 | 75 | 692 | 1186 |

SLC MASTERPLAN 512T

ULL MS JULIE 15R

SLC MASTER PLAN 134N
 SLC MISS BLACK LASS 120H
 SLC HEAD START 437M
 ULL MS JULIE 18M

Long spined, great haired, stylish bull. We really like this light weighted bull. Awesome sire and dam. He is the result of two really great parents. Don't pass this guy up sale day.

20

FRL FIR RIVER BILLY 603Z :: LOT 21



FRL FIR RIVER BILLY 603Z

POLLED :: PUREBRED 94% :: BULL :: RED
 JANUARY 4, 2012 :: FRL603Z :: CDGV148084

| CE | BW | WW | YW | MLK | TM | CED | BW | ADJ WW | ADJ YW |
|----|-----|----|----|-----|----|-----|----|--------|--------|
| 9 | 1.8 | 59 | 86 | 22 | 52 | 1 | 85 | 629 | 1112 |

JRI TOP RECRUIT 254U82

FRL FIR RIVER BROOKY 330X

JRI TOP SECRET 253M75 ET
 JRI MS COCOA 254S72
 FRL FIR RIVER ARROW 12U ET
 BBB BROOK LOLOA 200L

A good deep bodied eye appealing Top Recruit son. 603 is an excellent calving ease option for your heifer pen. Out of a first calver with a perfect utter.

21

FRL FIR RIVER RILEY 617Z

22

POLLED :: PUREBRED 94% :: BULL :: RED
 JANUARY 17, 2012 :: FRL617Z :: CDGV148095

| CE | BW | WW | YW | MLK | TM | CED | BW | ADJ WW | ADJ YW |
|----|-----|----|----|-----|----|-----|----|--------|--------|
| 8 | 1.9 | 56 | 85 | 24 | 52 | -4 | 80 | 643 | 1126 |

JRI TOP RECRUIT 254U82

JRI TOP SECRET 253M75 ET
 JRI MS COCOA 254S72

FRL FIR RIVER BECKY 208X

JRI FULLY EXPOSED 270N83
 DVE DAVIDSON MS JULIO 48R

Moderate framed, deep sided, good hiped bull. Excellent calving ease option bull.



FRL FIR RIVER RILEY 617Z :: LOT 22

FRL FIR RIVER VERDICT 659Z ET

23

HORNED :: PUREBRED 94% :: BULL :: RED
 JANUARY 26, 2012 :: FRL659Z :: CDGV148091

| CE | BW | WW | YW | MLK | TM | CED | BW | ADJ WW | ADJ YW |
|----|-----|----|----|-----|----|-----|----|--------|--------|
| 6 | 3.1 | 59 | 86 | 34 | 63 | 6 | 96 | 803 | 1350 |

ZTM MCCOY 34R VERDICT 83U

ULL RED JOLT 34R
 ZTM MCCOY 95M ESTER 39P
 ATC GOLD STAR AUSTRIA 10A
 ATC GOLD STAR 21B

ATC GOLD STAR 96E

Real powerhouse type bull. Great haired and lots of testicle. We calved out our first Verdict heifers this year, and wow are they awesome mama's.



FRL FIR RIVER VERDICT 659Z ET :: LOT 23

FRL FIR RIVER BIGHILL 668Z ET

24

POLLED :: PUREBRED 94% :: BULL :: RED
 FEBRUARY 6, 2012 :: FRL668Z :: CDGV148105

| CE | BW | WW | YW | MLK | TM | CED | BW | ADJ WW | ADJ YW |
|----|-----|----|----|-----|----|-----|----|--------|--------|
| 3 | 3.6 | 52 | 77 | 31 | 57 | 1 | 99 | 775 | 1334 |

DCC RIKHARDS RED 22R

CES DECKA FP 74M ET
 LEF PLD LILLIAN 8N
 ATC GOLD STAR AUSTRIA 10A
 ATC GOLD STAR 21B

ATC GOLD STAR 96E

Long bodied, heavy haired, powerful and sound. 668 is an ET son of the great ATC96E cow that had produced numerous herd bulls throughout the breed. Last years full brother sold to a purebred breeder Duke Cattle Company



FRL FIR RIVER BIGHILL 668Z ET :: LOT 24

FRL FIR RIVER KANE 685Z

25

SCURRED :: PUREBRED 94% :: BULL :: RED
 FEBRUARY 11, 2012 :: FRL685Z :: CDGV148092

| CE | BW | WW | YW | MLK | TM | CED | BW | ADJ WW | ADJ YW |
|----|-----|----|----|-----|----|-----|----|--------|--------|
| 8 | 2.2 | 48 | 66 | 29 | 53 | 2 | 87 | 618 | 1220 |

SLC MASTERPLAN 512T

SLC MASTER PLAN 134N
 SLC MISS BLACK LASS 120H
 LCS DAVIDSON PLD JULIO 432J
 DVE DAVIDSON MISS 55J

DVE DAVIDSON MS JULIO 48R

Moderate framed, great haired. This bull will give you big bodied, easy fleshing calves.



FRL FIR RIVER KANE 685Z :: LOT 25

STON ZORO 10Z :: LOT 26



STON ZORO 10Z

POLLED :: PUREBRED 94% :: BULL :: RED
 JANUARY 27, 2012 :: STON10Z :: CDGV146204

This is our favorite this year, we have a favorite cow, and it is his dam! She is also the dam to STON Xterminator, and STON Taurus, purchased by George Simpson last year, this is her third attempt... we are anxiously awaiting the embryo babies this year! This is the best performing bull this year, and 13U's have been the last 3 years. It will be hard to find a Gelbvieh bull this year anywhere with this much power, thickness, and depth. He is the real deal, and if not for the small button scurs that appeared after clipping, he would not be leaving our farm.

SLC MASTER PLAN 134N

SLC LATIGO 118L
 BTI MS CHARLA 2191F
 EV HUMDINGER 119M
 ATC GOLD STAR PLD JULIE 80J

STON MISS JULIE 13U

| CE | BW | WW | YW | MLK | TM | CED | BW | ADJ WW | ADJ YW |
|----|-----|----|----|-----|----|-----|----|--------|--------|
| 8 | 2.3 | 76 | 96 | 30 | 68 | 5 | 90 | 861 | 1307 |

26

STON ZEN RECRUIT 14Z :: LOT 27



STON ZEN RECRUIT 14Z

POLLED :: PUREBRED 94% :: BULL :: RED
 FEBRUARY 2, 2012 :: STON14Z :: CDGV146216

| CE | BW | WW | YW | MLK | TM | CED | BW | ADJ WW | ADJ YW |
|----|-----|----|-----|-----|----|-----|----|--------|--------|
| 6 | 3.4 | 71 | 100 | 21 | 56 | 0 | 98 | 735 | 1297 |

JRI TOP RECRUIT 254U82

JRI TOP SECRET 253M75 ET
 JRI MS COCOA 254S72

STON MISS ROSALIE 21U

EV HUMDINGER 119M
 VV ROSALIE 98R

Zen Recruit 14Z is our first bull calf sired by JRI Top Recruit to be offered. The shape, depth and maternal cow power behind this guy will certainly leave a lasting impression on any herd he goes to! Mothered by our next donor, this guy will impress you with his ability to sire longevity as a built in convenience factor. This cow family has risen to be one of our best, and it is simply because of the quality production found in this bull....and every other one! Not one calf has been a throw away, second string or disappointment in any fashion!

27

STON ZANDER 8Z :: LOT 28



STON ZANDER 8Z

POLLED :: PUREBRED 94% :: BULL :: RED
 JANUARY 24, 2012 :: STON8Z :: CDGV146210

| CE | BW | WW | YW | MLK | TM | CED | BW | ADJ WW | ADJ YW |
|----|-----|----|----|-----|----|-----|----|--------|--------|
| 9 | 2.5 | 54 | 80 | 33 | 60 | 8 | 90 | 656 | 1298 |

CES DECKA OUTBACK 75S

CES DECKA PRECISION 144P
 CES DECKA HARPER 150L

FRL FIR RIVER ANITA 302X

SLC MASTERPLAN 512T
 VV UNWRITTEN POEM 143U

If you are needing a thick, dark red, black footed, great haired bull Zander 8Z is your man! He has caught the eye since he was born, and gotten better each day. He has that herdbull look about him, and will certainly sire very marketable calves. He has a great first calving mother who is angular, moderate, and should prove to be a foundation female for us moving forward!

28

STON ZONED IN 7Z :: LOT 29



STON ZONED IN 7Z

POLLED :: PUREBRED 94% :: BULL :: RED
 JANUARY 23, 2012 :: STON7Z :: CDGV146211

SLC MASTER PLAN 134N

JBM INEZ 24T

SLC LATIGO 118L
 BTI MS CHARLA 2191F
 JRI HEAVY EQUIPMENT 125M3
 JBM INEZ 16L

29

One of our absolute standout bulls this year! This guy has been a performer this year, which is no surprise being from the Inez family. His mother is our original Inez purchased from the JBM dispersal and she has proven to be a great investment. Her calves come little, and grow like crazy and 7Z has been the best yet! Females from this family are assets to be retained, and the steers will be coffee shop bragging rights without a doubt! Buy with confidence, as they do not come any more complete and reliable than this

| CE | BW | WW | YW | MLK | TM | CED | BW | ADJ WW | ADJ YW |
|----|-----|----|----|-----|----|-----|----|--------|--------|
| 7 | 2.1 | 74 | 91 | 31 | 68 | 7 | 91 | 847 | 1244 |

STON ZANDER 15Z :: LOT 30



STON ZANDER 15Z

POLLED :: PUREBRED 94% :: BULL :: RED
 FEBRUARY 6, 2012 :: STON15Z :: CDGV146207

30

| CE | BW | WW | YW | MLK | TM | CED | BW | ADJ WW | ADJ YW |
|----|-----|----|----|-----|----|-----|----|--------|--------|
| 7 | 2.6 | 52 | 67 | 30 | 56 | 6 | 92 | 680 | 1253 |

CES DECKA OUTBACK 75S

CES DECKA PRECISION 144P
 CES DECKA HARPER 150L
 VV UR JEST'N'TIME 72U
 STON MISS PARADEE 64R

VV MISS PARADEE 109X

Zander 15Z is a stylish bull who is mothered by a member of our Paradee cow family, known for their maternal influence in the breed. Zander 15Z is certainly a bull with above average performance but his real effect should be the females he will leave behind for generations to come.

STON ZEUS 25Z :: LOT 31



STON ZEUS 25Z

POLLED :: PUREBRED 94% :: BULL :: RED
 FEBRUARY 26, 2012 :: STON25Z :: CDGV146224

31

| CE | BW | WW | YW | MLK | TM | CED | BW | ADJ WW | ADJ YW |
|----|-----|----|----|-----|----|-----|----|--------|--------|
| 8 | 2.5 | 55 | 67 | 30 | 57 | 4 | 96 | 722 | 1266 |

VV XTRA TIME 214X

SLC TYE 476T ET
 SPG PLD SUNNY PLAIN NIKKI 17
 VG VALLEY BLACK CHESS 64J
 VG VALLEY POLLED 43J

VG VALLEY MISS 7L

Zeus 25Z is long, and smooth which should spell calving ease. Pedigree indicates he should work well as a heifer sire, and numbers show a trend. Dark red, extremely good haired, this guy will also not disappoint in the performance department. Rest assured, he is raised by a tremendous mother who is very moderate and easy fleshing. . . . ground sow comes to mind. Great uddered, mild mannered, and always bring home a great calf. At 12 years of age, she is still going strong!

STON ZEBULOUS 32Z :: LOT 32



STON ZEBULOUS 32Z

POLLED :: PUREBRED 94% :: BULL :: RED
 MARCH 6, 2012 :: STON32Z :: CDGV148074

CES DECKA OUTBACK 75S

CES DECKA PRECISION 144P
 CES DECKA HARPER 150L
 STON TRAVELER 7T ET
 VG VALLEY MISS 7L

STON LADY ANTEBELLUM 28W

| CE | BW | VW | YW | MLK | TM | CED | BW | ADJ WW | ADJ YW |
|----|-----|----|----|-----|----|-----|----|--------|--------|
| 8 | 2.0 | 51 | 70 | 34 | 60 | 4 | 86 | 818 | 1314 |

STON 32Z is a great option for those looking for performance, and females who can be retained. His grandmother, mother, and sister have all thus far proven to be a stellar addition to our herd and should develop into a great cow family moving forward. Several commercial bulls have been produced from this family and another cow family member sales today as well. Predictability, longevity and performance are all key performance indicators in this industry and 32Z will deliver for you!

32

VS ZZ TIP 6Z :: LOT 33



VS ZZ TOP 6Z

POLLED :: PUREBRED 94% :: BULL :: RED
 JANUARY 23, 2012 :: VS6Z :: CDGV146882

| CE | BW | VW | YW | MLK | TM | CED | BW | ADJ WW | ADJ YW |
|----|-----|----|----|-----|----|-----|----|--------|--------|
| 6 | 2.4 | 63 | 85 | 30 | 61 | 7 | 87 | 715 | 1240 |

VV XTRA TIME 214X

SLC TYE 476T ET
 SPG PLD SUNNY PLAIN NIKKI 17

VV XACT FIGURE 14X

JDPD ASTRO 407S
 VV REBELLO 48S

Soggy, complete and a class winner at the National Gelbvieh show! ZZ Top is a stylish herd sire prospect who will sire consistent, quality offspring who will gain and grade with the best of them! Females should be moderate, and very acceptable in terms of efficient production based upon the cow family heritage presented in this genetic package. If you are also looking for a docile temperament, you will not find one better

33

STON BLACK ZIGGY 24Z :: LOT 34



STON BLACK ZIGGY 24Z

POLLED :: PUREBRED 94% :: BULL :: BLACK
 FEBRUARY 25, 2012 :: STON24Z :: CDGV146220

| CE | BW | VW | YW | MLK | TM | CED | BW | ADJ WW | ADJ YW |
|----|------|----|----|-----|----|-----|----|--------|--------|
| 11 | -0.8 | 53 | 63 | 34 | 60 | 5 | 73 | 726 | 1203 |

VV XTRA TIME 214X

SLC TYE 476T ET
 SPG PLD SUNNY PLAIN NIKKI 17

STON MISS BLACK PARADEE 24T

WGG PANTHER 66P
 JBM PARADEE 14N

STON 24Z is the only black bull we have to offer this year, and he is a sure fire heifer bull who will let you sleep through the night! He is mothered by an outstanding young Paradee female who is starting to blaze her own trail. Great haired, and still enough performance to help pay bills, what is not to like? Temperament, second to none

34

MKID ZODIAK 33Z

35

POLLED :: PUREBRED 94% :: BULL :: RED
 MARCH 15, 2012 :: MKID33Z :: CDGV146212

| CE | BW | WW | YW | MLK | TM | CED | BW | ADJ WW | ADJ YW |
|----|-----|----|----|-----|----|-----|----|--------|--------|
| 7 | 2.0 | 36 | 54 | 39 | 56 | 3 | 92 | 698 | 1280 |

CES DECKA OUTBACK 75S

CES DECKA PRECISION 144P
 CES DECKA HARPER 150L

LEF PLD LILLIAN 8N

VDG VAN DEAU BLUE SUEDE SHOE
 LEF LILLIAN 10L

Zodiak 33Z is a great bull to sire those commercial steers and females. He is a performance enhancing individual with depth and maternal power in his pedigree. He should sire calves that will top the auction and feed tremendously!



MKID ZODIAK 33Z :: LOT 35

STON ZACK 17Z

36

POLLED :: PUREBRED 94% :: BULL :: RED
 FEBRUARY 17, 2012 :: STON17Z :: CDGV146221

| CE | BW | WW | YW | MLK | TM | CED | BW | ADJ WW | ADJ YW |
|----|-----|----|----|-----|----|-----|----|--------|--------|
| 8 | 1.5 | 48 | 76 | 33 | 57 | 5 | 82 | 659 | 1227 |

CES DECKA OUTBACK 75S

CES DECKA PRECISION 144P
 CES DECKA HARPER 150L

STON MS CERTAIN GLOW 14T ET

NGAC REMITALL PLD EXCEL 232E
 JRI MS CERTAIN GLOW 253M63

Zack 17Z is a herdsire to produce those buckskin calves. The top side of his pedigree provides a strong calving ease component with tremendous thickness and do-ability. 17Z was mothered by a member of our Certain Glow clan, who has thus far produced heifers which have all been retained. They have proven to be very productive cows that bring in heavy calves and this bull will certainly not disappoint! He has great thickness, feet, hair, testicles, and wrap that around the cow family that he stands on.....this one is a great option!



STON ZACK 17Z :: LOT 36

VS ZERO ZERO SEVEN 34Z

37

POLLED :: PERCENTAGE 88% :: BULL :: RED
 MARCH 25, 2012 :: VS34Z :: CDGV146883

| CE | BW | WW | YW | MLK | TM | CED | BW | ADJ WW | ADJ YW |
|----|-----|----|----|-----|----|-----|----|--------|--------|
| 10 | 1.6 | 46 | 62 | 33 | 55 | 8 | 83 | 663 | 1237 |

CES DECKA OUTBACK 75S

CES DECKA PRECISION 144P
 CES DECKA HARPER 150L

VV XCUSE ME 49X

VV UBET ON ME 160U
 VV PILAR MORENA 22P

If you are searching for a heifer bull candidate, here he is. While he is a little younger, he will fit into that April/May calving group as a heifer bull. Sired by CES Outback, our mature herdsire who also sired the 2012 Canadian National Champion Bull, this guy has grown out extremely well and will sire thick, moderate and easy fleshing cattle while letting you sleep at night. His mother is a female we would all like a heard full of, moderate and very maternally orientated



VS ZERO ZERO SEVEN 34Z :: LOT 37

MKID ZIGGY 26Z

38

POLLED :: PUREBRED 94% :: BULL :: RED
 FEBRUARY 27, 2012 :: MKID26Z :: CDGV146206

| CE | BW | WW | YW | MLK | TM | CED | BW | ADJ WW | ADJ YW |
|----|-----|----|----|-----|----|-----|----|--------|--------|
| 10 | 0.8 | 55 | 82 | 26 | 54 | 6 | 84 | 627 | 1269 |

STON XTERMINATOR 7X

STON UNDER RATED 7U
 STON MISS JULIE 13U

JBM ROSEBUD 18S

JRI PLD FREE AGENT 125J3
 JBM ROSEBUD 21P

Ziggy 26Z was not cooperating on picture day, but he is one of the most eye appealing bulls we have to offer this year! He is sired by Xterminator 7X and mothered by a beautiful Free Agent cow! The maternal cow power on both sides of his pedigree should be a recipe for success, and herd influence for generations to come.



MKID ZIGGY 26Z :: LOT 38

AMD DAVIDSON SPLENDER 7Z :: LOT 39



AMD DAVIDSON SPLENDER 7Z

POLLED :: PUREBRED 94% :: BULL :: RED
 FEBRUARY 24, 2012 :: AMD7Z :: CDGV147988

Davidson Splender carries all the traits that make the Gelbvieh breed great. He will sire fast growing calves that are full of meat and females that you will be proud to have in your replacement pen. You will appreciate his genetic makeup.

WDE DAVIDSON SHOWTIME 10U

JRI FULLY EXPOSED 270N83
 BLB GOODVIEW SARA 21S
 DVE DAVIDSON SUPERMAN 100J
 CVG CYPRESS VIEW JUANITA 43J

AMD DAVIDSON ALVERA 4S

| CE | BW | WW | YW | MLK | TM | CED | BW | ADJ WW | ADJ YW |
|----|-----|----|----|-----|----|-----|----|--------|--------|
| 7 | 4.0 | 63 | 84 | 29 | 61 | 3 | 94 | 771 | 1325 |

39

WDE DAVIDSON DYNAMIC 2Z :: LOT 40



WDE DAVIDSON DYNAMIC 2Z

POLLED :: PUREBRED 94% :: BULL :: RED
 FEBRUARY 12, 2012 :: WDE2Z :: CDGV147949

| CE | BW | WW | YW | MLK | TM | CED | BW | ADJ WW | ADJ YW |
|----|-----|----|----|-----|----|-----|----|--------|--------|
| 8 | 1.7 | 58 | 81 | 36 | 65 | 3 | 78 | 765 | 1322 |

WDE DAVIDSON SHOWTIME 10U

JRI FULLY EXPOSED 270N83
 BLB GOODVIEW SARA 21S

WDE DAVIDSON SASKATOON 1X

DVE DAVIDSON PLD ROMEO 73T
 KCB PINTO CREEK MADONNA 87M

The Davidson's are bringing some tremendous bulls to Saskatoon. Davidson Dynamic is a multi-pollled son of Showtime. He has the meat, thickness and absolute style that breeders are looking for. Everyone will appreciate this good natured herdsire.

40

WDE DAVIDSON BOARDWALK 5Z :: LOT 41



WDE DAVIDSON BOARDWALK 5Z

POLLED :: PUREBRED 94% :: BULL :: RED
 FEBRUARY 18, 2012 :: WDE5Z :: CDGV147954

| CE | BW | WW | YW | MLK | TM | CED | BW | ADJ WW | ADJ YW |
|----|-----|----|----|-----|----|-----|----|--------|--------|
| 7 | 0.2 | 44 | 62 | 42 | 64 | 4 | 78 | 765 | 1344 |

DVE DAVIDSON PLD ROMEO 73T

DVE DAVIDSON PLD MARK 194P
 DVE DAVIDSON MS RED WRAP 81R

KCB PINTO CREEK MADONNA 87M

AMD DAVIDSON BLEND 11J
 CVG CYPRESS VIEW EYEBROW 38E

Boardwalk is a Davidson Romeo son and out of a good producing Pinto Creek female. He is multi-pollled with a light birth weight, smooth shoulders and meat in all the right places. Keep Boardwalk in mind on sale day.

41



AMD DAVIDSON SHOWPIECE 10Z :: LOT 42

AMD DAVIDSON SHOWPIECE 10Z

POLLED :: PUREBRED 94% :: BULL :: RED
MARCH 12, 2012 :: AMD10Z :: CDGV147977

Showpiece comes highly recommended for cattlemen that want capacity, growth and extra cutability injected in to their herd. By choosing Showpiece as your next herdsire you will be able to produce superior females with awesome eye appeal and excellent udders. He is currently gaining 4.09 lbs / day.

WDE DAVIDSON SHOWTIME 10U

AMD DAVIDSON MILEY 18T

JRI FULLY EXPOSED 270N83
BLB GOODVIEW SARA 21S
DVE DAVIDSON SUPERMAN 100J
CVG CYPRESS VIEW JUANITA 43J

| CE | BW | WW | YW | MLK | TM | CED | BW | ADJ WW | ADJ YW |
|----|-----|----|----|-----|----|-----|----|--------|--------|
| 7 | 2.4 | 62 | 87 | 31 | 63 | 3 | 83 | 789 | 1432 |

42



WDE DAVIDSON HUDSON 7Z :: LOT 43

WDE DAVIDSON HUDSON 7Z

POLLED :: PUREBRED 94% :: BULL :: RED
MARCH 4, 2012 :: WDE7Z :: CDGV147961

| CE | BW | WW | YW | MLK | TM | CED | BW | ADJ WW | ADJ YW |
|----|-----|----|----|-----|----|-----|----|--------|--------|
| 6 | 1.9 | 45 | 56 | 37 | 60 | 1 | 86 | 765 | 1371 |

DVE DAVIDSON PLD ROMEO 73T

DVE DAVIDSON PLD MARK 194P
DVE DAVIDSON MS RED WRAP 81R
DVE DAVIDSON SUPERMAN 100J
AMD DAVIDSON 5C

AMD DAVIDSON PAM 55P

This Romeo son brings extra length and pizzazz to the table. Davidson Hudson should sire super feeder calves. He would work well on British base females. His growth will add pounds to your weaning weights and extra dollars in your pocket. Take note of his scrotal measurement.

43



WDE DAVIDSON GOLD BUCKLE 10Z :: LOT 44

WDE DAVIDSON GOLD BUCKLE 10Z

POLLED :: PUREBRED 94% :: BULL :: RED
MARCH 9, 2012 :: WDE10Z :: CDGV147965

| CE | BW | WW | YW | MLK | TM | CED | BW | ADJ WW | ADJ YW |
|----|-----|----|----|-----|----|-----|----|--------|--------|
| 6 | 4.2 | 61 | 84 | 29 | 61 | 3 | 95 | 763 | 1361 |

WDE DAVIDSON SHOWTIME 10U

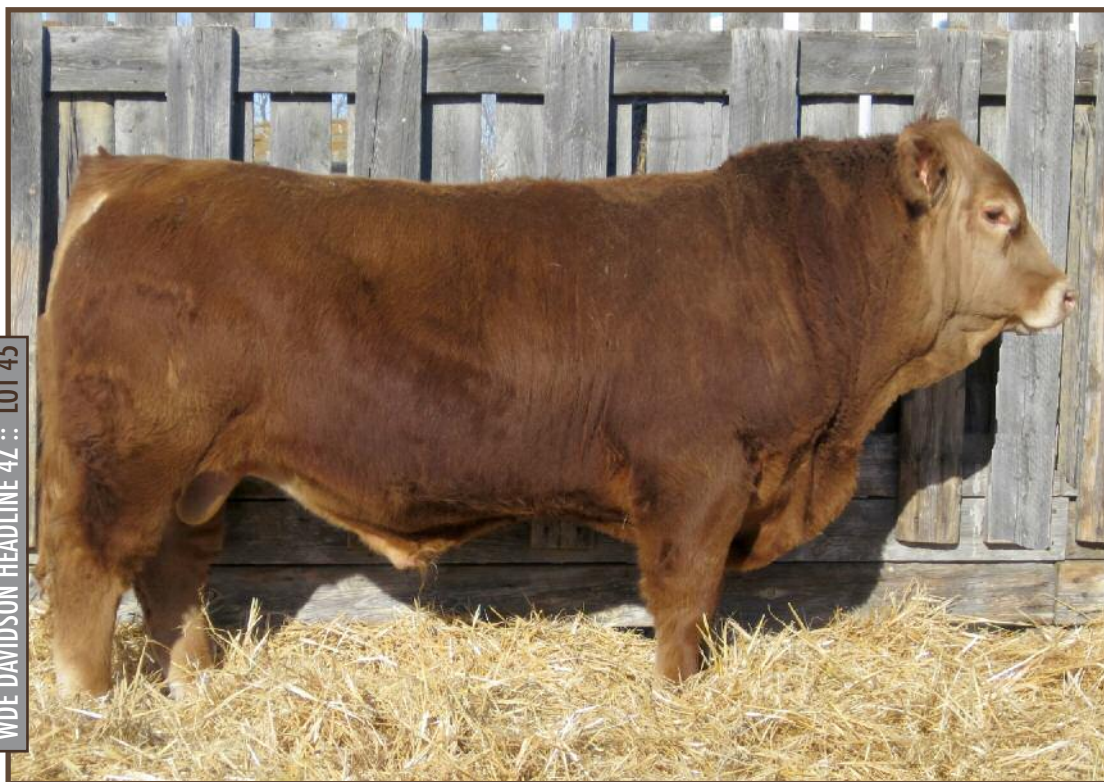
JRI FULLY EXPOSED 270N83
BLB GOODVIEW SARA 21S
DVE DAVIDSON SUPERMAN 100J
AMD DAVIDSON MONICA 14H

WDE DAVIDSON TARA LEE 16P

Davidson genetics run deep in the pedigree of this smart looking herdsire. Gold Buckle has a real strong top line with thick hindquarters. He is the result of breeding the best bulls to the best females in our herd. He will prove himself to be a good one.

44

WDE DAVIDSON HEADLINE 4Z :: LOT 45



WDE DAVIDSON HEADLINE 4Z

POLLED :: PUREBRED 94% :: BULL :: RED
 FEBRUARY 14, 2012 :: WDE4Z :: CDGV147951

Headline is another good Showtime son. He likes to stand up and say "look at me". Wow, what a dandy looking bull. This beefy, deep bodied individual is a complete package. He will look great in his new summer home.

WDE DAVIDSON SHOWTIME 10U

WDE DAVIDSON SUNSET 6W

JRI FULLY EXPOSED 270N83
 BLB GOODVIEW SARA 21S
 DVE DAVIDSON PLD ROMEO 73T
 DVE DAVIDSON MS DAZZEL 79R

| CE | BW | WW | YW | MLK | TM | CED | BW | ADJ WW | ADJ YW |
|----|-----|----|----|-----|----|-----|----|--------|--------|
| 7 | 3.0 | 59 | 81 | 33 | 62 | 1 | 84 | 744 | 1326 |

45

AMD DAVIDSON FRONTIER 6Z :: LOT 46



AMD DAVIDSON FRONTIER 6Z

POLLED :: PUREBRED 94% :: BULL :: RED
 FEBRUARY 23, 2012 :: AMD6Z :: CDGV147987

| CE | BW | WW | YW | MLK | TM | CED | BW | ADJ WW | ADJ YW |
|----|-----|----|----|-----|----|-----|----|--------|--------|
| 7 | 2.9 | 70 | 97 | 30 | 65 | 2 | 75 | 699 | 1267 |

WDE DAVIDSON SHOWTIME 10U

AMD DAVIDSON LULABELLE 3U

JRI FULLY EXPOSED 270N83
 BLB GOODVIEW SARA 21S
 JC PEMBINA MCLEOD 86M
 AMD DAVIDSON HILARY 8H

Showtime has done it again! Frontier comes from a powerful cow family. His dam is sired by Pembina McLeod, genetics that are dependable. He will sire growth calves with plenty of meat and take your herd down the middle of the road.

46

AMD DAVIDSON RED TUXEDO 11Z :: LOT 47



AMD DAVIDSON RED TUXEDO 11Z

POLLED :: PUREBRED 94% :: BULL :: RED
 MARCH 14, 2012 :: AMD11Z :: CDGV147999

| CE | BW | WW | YW | MLK | TM | CED | BW | ADJ WW | ADJ YW |
|----|-----|----|----|-----|----|-----|----|--------|--------|
| 9 | 1.7 | 61 | 94 | 34 | 66 | 5 | 83 | 780 | 1543 |

WDE DAVIDSON SHOWTIME 10U

AMD DAVIDSON LONDON 1T

JRI FULLY EXPOSED 270N83
 BLB GOODVIEW SARA 21S
 DCSF POST ROCK TOP BRASS ET
 AMD DAVIDSON SHAY LYNN 7R

This Showtime son stands out in the pen like a red tuxedo. He is herdsire material. He dark red, with eye appeal, meat and conformation. He is currently gaining 4.85 lbs/day. You are sure to mark him in your catalogue.

47

AMD DAVIDSON EXPRESS 2Z

48

POLLED :: PUREBRED 94% :: BULL :: RED :: TWIN

FEBRUARY 13, 2012 :: AMD2Z :: CDGV147984

| CE | BW | WW | YW | MLK | TM | CED | BW | ADJ WW | ADJ YW |
|----|-----|----|-----|-----|----|-----|----|--------|--------|
| 7 | 2.5 | 69 | 100 | 35 | 70 | 1 | 70 | 737 | 1342 |

WDE DAVIDSON SHOWTIME 10U JRI FULLY EXPOSED 270N83
BLB GOODVIEW SARA 21S

AMD DAVIDSON PRETTY'N'RED 4W DVE DAVIDSON PLD ROMEO 73T
AMD DAVIDSON HILARY 8H

Davidson Express is a big strong individual sired by Showtime and out of the Davidson Hilary cow family. His dam is still producing in our herd, making longevity a real asset. Come to the sale early and check out these good Showtime sons.



WDE DAVIDSON SHOWTIME 10U :: REF

AMD DAVIDSON LEANDER 4Z

49

POLLED :: PUREBRED 94% :: BULL :: RED

FEBRUARY 18, 2012 :: AMD4Z :: CDGV147986

| CE | BW | WW | YW | MLK | TM | CED | BW | ADJ WW | ADJ YW |
|----|------|----|----|-----|----|-----|----|--------|--------|
| 8 | -0.1 | 43 | 59 | 37 | 58 | 1 | 70 | 681 | 1263 |

DVE DAVIDSON PLD ROMEO 73T DVE DAVIDSON PLD MARK 194P
DVE DAVIDSON MS RED WRAP 81R

WDE DAVIDSON BONNIE 1U JC PEMBINA MCLEOD 86M
AMD DAVIDSON MONICA 14H

Davidson Leander is a light birth weight bull sired by Romeo. Romeo genetics bring ease of calving and daughters ease of calving in a stylish package. His dam is a daughter of Pembina McLeod. Solid genetics in this fellow.



DVE DAVIDSON PLD ROMEO 73T :: REF

AMD DAVIDSON JED 3Z

50

POLLED :: PUREBRED 94% :: BULL :: RED :: TWIN

FEBRUARY 16, 2012 :: AMD3Z :: CDGV147984

| CE | BW | WW | YW | MLK | TM | CED | BW | ADJ WW | ADJ YW |
|----|-----|----|----|-----|----|-----|----|--------|--------|
| 7 | 3.8 | 69 | 98 | 37 | 71 | 0 | 86 | 660 | 1169 |

DVE DAVIDSON PLD ROMEO 73T DVE DAVIDSON PLD MARK 194P
DVE DAVIDSON MS RED WRAP 81R

AMD DAVIDSON SOPHIA 6X WDE DAVIDSON SHOWTIME 10U
AMD DAVIDSON MONTANA 12T

Davidson Jed is a long neat bull with a smart looking head. Jed lost his mother in the summertime and had to take on the world alone. He will be a great choice for a crossbreeding program, siring powerful steers for the feedlots.

WDE DAVIDSON LARIMIE 6Z

51

POLLED :: PUREBRED 94% :: BULL :: RED

FEBRUARY 20, 2012 :: WDE6Z :: CDGV147957

| CE | BW | WW | YW | MLK | TM | CED | BW | ADJ WW | ADJ YW |
|----|-----|----|----|-----|----|-----|----|--------|--------|
| 6 | 3.1 | 62 | 85 | 28 | 59 | 3 | 83 | 694 | 1262 |

WDE DAVIDSON SHOWTIME 10U JRI FULLY EXPOSED 270N83
BLB GOODVIEW SARA 21S

WDE DAVIDSON CARRY ANNE 11U JC PEMBINA MCLEOD 86M
DSL DEEP SANDS RENU 59R

Our planned mating of Davidson Showtime and Davidson Carry Anne has really paid off. Larimie has a family tree of good genetics, his dam sired by Pembina McLeod, The People's Choice Champion. He is clean cut, square hiped and ready to go to work. He may be your pick on sale day.

AMD DAVIDSON MANKOTA 12Z

52

POLLED :: PUREBRED 94% :: BULL :: RED

APRIL 8, 2012 :: AMD12Z :: CDGV147981

| CE | BW | WW | YW | MLK | TM | CED | BW | ADJ WW | ADJ YW |
|----|-----|----|----|-----|----|-----|----|--------|--------|
| 8 | 2.4 | 58 | 98 | 36 | 70 | 3 | 84 | 702 | 1297 |

WDE DAVIDSON SHOWTIME 10U JRI FULLY EXPOSED 270N83
BLB GOODVIEW SARA 21S

AMD DAVIDSON COVER GIRL 2W DVE DAVIDSON PLD ROMEO 73T
AMD DAVIDSON LONDON 1T

Davidson Mankota is the youngest bull in the Davidson pen. He carries many of the same genetics as the older bulls. He will sire excellent replacement females, he is from a good looking dam and an awesome sister is in the herd. He will grow like the big boys.



THE DAVIDSONS



SASKATOON GELBVIEW FEMALES

WDE DAVIDSON LADY MERANDA 3Z :: LOT 53



WDE DAVIDSON LADY MERANDA 3Z

POLLED :: PUREBRED 94% :: FEMALE :: RED
FEBRUARY 16, 2012 :: WDE3Z :: CDGV147953

| CE | BW | WW | YW | MLK | TM | CED | BW | ADJ WW | ADJ YW |
|----|-----|----|----|-----|----|-----|----|--------|--------|
| 9 | 1.5 | 68 | 95 | 35 | 69 | 2 | 76 | 600 | 995 |

WDE DAVIDSON SHOWTIME 10U JRI FULLY EXPOSED 270N83
BLB GOODVIEW SARA 21S
AMD DAVIDSON JULIET 15W DVE DAVIDSON PLD ROMEO 73T
AMD DAVIDSON CHIC 6S

Lady Meranda is one classy gal. Showtime females go that extra mile in style and meat. This show quality female is deep bodied and correct in her stature. You be the judge.

53

WDE DAVIDSON LADY MADALYNN 15Z :: LOT 54



WDE DAVIDSON LADY MADALYNN 15Z

POLLED :: PUREBRED 94% :: FEMALE :: RED
MARCH 14, 2012 :: WDE15Z :: CDGV147969

| CE | BW | WW | YW | MLK | TM | CED | BW | ADJ WW | ADJ YW |
|----|-----|----|----|-----|----|-----|----|--------|--------|
| 7 | 2.5 | 52 | 76 | 37 | 67 | 2 | 85 | 557 | 975 |

DVE DAVIDSON PLD ROMEO 73T DVE DAVIDSON PLD MARK 194P
DVE DAVIDSON MS RED WRAP 81R
BLB GOODVIEW SARA 21S AMD DAVIDSON SUPREME 4P
BLB GOODVIEW PLD SARAH 8N

Lady Madalyn is looking snazzy and cute, just the way you like them. Wade bought her dam from Goodview Gelbvieh at the Canadian Western Agribition; she has done a tremendous job at the Davidson's. Her quality genetics makes her a solid choice for your herd.

54

WDE DAVIDSON LADY DIANNE 17Z

55

POLLED :: PUREBRED 94% :: FEMALE :: RED
MARCH 21, 2012 :: WDE17Z :: CDGV147970

| CE | BW | WW | YW | MLK | TM | CED | BW | ADJ WW | ADJ YW |
|----|-----|----|----|-----|----|-----|----|--------|--------|
| 7 | 3.2 | 58 | 89 | 31 | 63 | 3 | 87 | 593 | 988 |

WDE DAVIDSON SHOWTIME 10U JRI FULLY EXPOSED 270N83
BLB GOODVIEW SARA 21S

AMD DAVIDSON DANCER 2S DVE DAVIDSON SUPERMAN 100J
WRS MISS JU JU 2J

Davidson Lady Dianne is a beautiful daughter of Showtime; it is very hard to part with Showtime females. They mature into tremendous young cows. She is very broody and really pretty. She will turn into a cow that you will be proud to own.



WDE DAVIDSON LADY DIANNE 17Z :: LOT 55

WDE DAVIDSON LADY MADANNA 19Z

56

POLLED :: PUREBRED 94% :: FEMALE :: RED
MARCH 23, 2012 :: WDE19Z :: CDGV147972

| CE | BW | WW | YW | MLK | TM | CED | BW | ADJ WW | ADJ YW |
|----|-----|----|----|-----|----|-----|----|--------|--------|
| 8 | 2.9 | 64 | 95 | 34 | 68 | 4 | 84 | 652 | 935 |

WDE DAVIDSON SHOWTIME 10U JRI FULLY EXPOSED 270N83
BLB GOODVIEW SARA 21S

WDE DAVIDSON HANNA 12T DVE DAVIDSON MR RED 111R
DSL DEEP SANDS RENU 59R

The Davidsons have entered the core of their replacement heifer pen into the sale. Lady Madana is a gorgeous heifer; her dam is as pretty as a picture, with a perfect udder. She could be the start of a new cow family in your herd. Buy with confidence. You will be glad you did.



WDE DAVIDSON LADY MADANNA 19Z :: LOT 56

WDE DAVIDSON LADY FRANCINE 21Z

57

POLLED :: PUREBRED 94% :: FEMALE :: RED
MARCH 25, 2012 :: WDE21Z :: CDGV147975

| CE | BW | WW | YW | MLK | TM | CED | BW | ADJ WW | ADJ YW |
|----|-----|----|----|-----|----|-----|----|--------|--------|
| 5 | 1.6 | 65 | 99 | 36 | 71 | 1 | 72 | 625 | 1015 |

WDE DAVIDSON SHOWTIME 10U JRI FULLY EXPOSED 270N83
BLB GOODVIEW SARA 21S

DVE DAVIDSON MS PLD SASSY MCFG MONTANA KID 50J ET
HAG 38G

Lady Francine is a fancy deep bodied heifer, sired by Showtime and out of Davidson Ms Pld Sassy. Her dam is a "never miss" female, a cow that can be counted on year in and year out. Lady Francine is well worth your investment.



WDE DAVIDSON LADY FRANCINE 21Z :: LOT 57

WDE DAVIDSON LADY MERISSA 13Z

58

POLLED :: PUREBRED 94% :: FEMALE :: RED
MARCH 14, 2012 :: WDE13Z :: CDGV147968

| CE | BW | WW | YW | MLK | TM | CED | BW | ADJ WW | ADJ YW |
|----|-----|----|----|-----|----|-----|----|--------|--------|
| 6 | 1.9 | 50 | 67 | 37 | 64 | 1 | 78 | 613 | 931 |

DVE DAVIDSON PLD ROMEO 73T DVE DAVIDSON PLD MARK 194P
DVE DAVIDSON MS RED WRAP 81R

AMD DAVIDSON DEVONA 16S DVE DAVIDSON SUPERMAN 100J
AMD DAVIDSON MODELLE 9F

Here is a clean cut daughter of Romeo, a sire that is doing a super job in adding eye appeal. She has a pretty dam with excellent udder suspension. Like mother, like daughter.



FRL FIR RIVER TANISH 623Z

59

POLLED :: PUREBRED 94% :: FEMALE :: RED
 JANUARY 17, 2012 :: FRL623Z :: CDGV148101

| CE | BW | WW | YW | MLK | TM | CED | BW | ADJ WW | ADJ YW |
|----|-----|----|----|-----|----|-----|----|--------|--------|
| 2 | 4.8 | 53 | 75 | 34 | 60 | -2 | 85 | 577 | |

DVE DAVIDSON PLD DUC 137M

DVE DAVIDSON FAMOUS 58K
 DVE DAVIDSON VALENTINE 40J
 FRL FIR RIVER BIG MAC 55R ET
 TSCC TWIN STAR MISS MATRIX 57

FRL FIR RIVER TANISH 43T

Long bodied and stylish. Has all the great makings of a cow.

FRL FIR RIVER WILONA 645Z

60

POLLED :: PUREBRED 94% :: FEMALE :: RED
 JANUARY 27, 2012 :: FRL645Z :: CDGV1480998

| CE | BW | WW | YW | MLK | TM | CED | BW | ADJ WW | ADJ YW |
|----|-----|----|----|-----|----|-----|----|--------|--------|
| 4 | 5.0 | 58 | 83 | 31 | 60 | 2 | 92 | 637 | |

CIRS ALTERNATING CURRENT 7RU

DLGG 30S
 CIRJ 7LR

RJD JESSIE'S WILONA 73W

JRI FULLY EXPOSED 270N83
 RJD JESSIE'S NASHVILLE 45R

Real nice eye appealing outcross pedigree heifer.

FRL FIR RIVER KISS 671Z

61

POLLED :: PUREBRED 94% :: FEMALE :: RED
 FEBRUARY 8, 2012 :: FRL671Z :: CDGV148098

| CE | BW | WW | YW | MLK | TM | CED | BW | ADJ WW | ADJ YW |
|----|-----|----|----|-----|----|-----|----|--------|--------|
| 8 | 1.9 | 56 | 78 | 25 | 53 | 3 | 80 | 589 | |

SLC MASTERPLAN 512T

SLC MASTER PLAN 134N
 SLC MISS BLACK LASS 120H
 DVE DAVIDSON BLK MOOLA 45R
 TSCC TWIN STAR BLACK KISS 1K

RJD 1K'S MISS KISS 424T

Really like this stylish SLC512T daughter. She will put lots of style into her calves.

FRL FIR RIVER ERIKA 697Z

62

POLLED :: PUREBRED 94% :: FEMALE :: RED
 FEBRUARY 22, 2012 :: FRL697Z :: CDGV148097

| CE | BW | WW | YW | MLK | TM | CED | BW | ADJ WW | ADJ YW |
|----|-----|----|----|-----|----|-----|----|--------|--------|
| 7 | 3.0 | 71 | 99 | 24 | 60 | 4 | 75 | 647 | |

OHF WORLD CLASS 16W

BLB GOODVIEW PLD TITAN 6T
 OHF HAVEN 6T

FRL FIR RIVER ERIKA 273X

SLC MASTERPLAN 512T
 FRL FIR RIVER LEXI 71U

Great haired dark red heifer will make a really great cow.

FRL FIR RIVER KALLIE 735Z

63

POLLED :: PUREBRED 94% :: FEMALE :: RED
 APRIL 22, 2012 :: FRL35Z :: CDGV148100

| CE | BW | WW | YW | MLK | TM | CED | BW | ADJ WW | ADJ YW |
|----|-----|----|----|-----|----|-----|----|--------|--------|
| 8 | 1.6 | 55 | 70 | 39 | 67 | 1 | 85 | 680 | |

FRL FIR RIVER THORTON 28W

JRI FULLY EXPOSED 270N83
 KCB PINTO CREEK NATASHA 16N
 DVE DAVIDSON PLD LUCKY 295P
 DVE DAVIDSON MS JIM 42P

FRL FIR RIVER KALLIE 91U

Real feminine, showy type heifer.



SLC MASTERPLAN 512T :: REF
 SIRE OF SEVERAL FIR RIVER LOTS

SLC MASTERPLAN 512T

POLLED :: PUREBRED 94% :: BULL :: RED
 DECEMBER 28, 2007 :: SLC 512T :: CDGV129173

| CE | BW | WW | YW | MLK | TM | CED | BW | ADJ WW | ADJ YW |
|----|-----|----|----|-----|----|-----|----|--------|--------|
| 11 | 2.0 | 61 | 78 | 27 | 57 | 9 | 86 | 697 | 1141 |

SLC MASTER PLAN 134N

SLC LATIGO 118L
 BTI MS CHARLA 2191F
 XZR C342 (STUBBY)
 SLC BLACK LASS 98D

SLC MISS BLACK LASS 120H





HUDSON BAY CO-OP AGRO DEPT.
Opening April 2012
Hudson Bay SK.
306-865-2288
Call us for all your Feed Needs
Horse, Cattle, Sheep and Pet

You have everything to GAIN!
 When you use Performance Ratios by



Masterfeeds



Consult **Daniel Dueck 741.9775**, or one of the following for your Beef Nutrition Solutions.

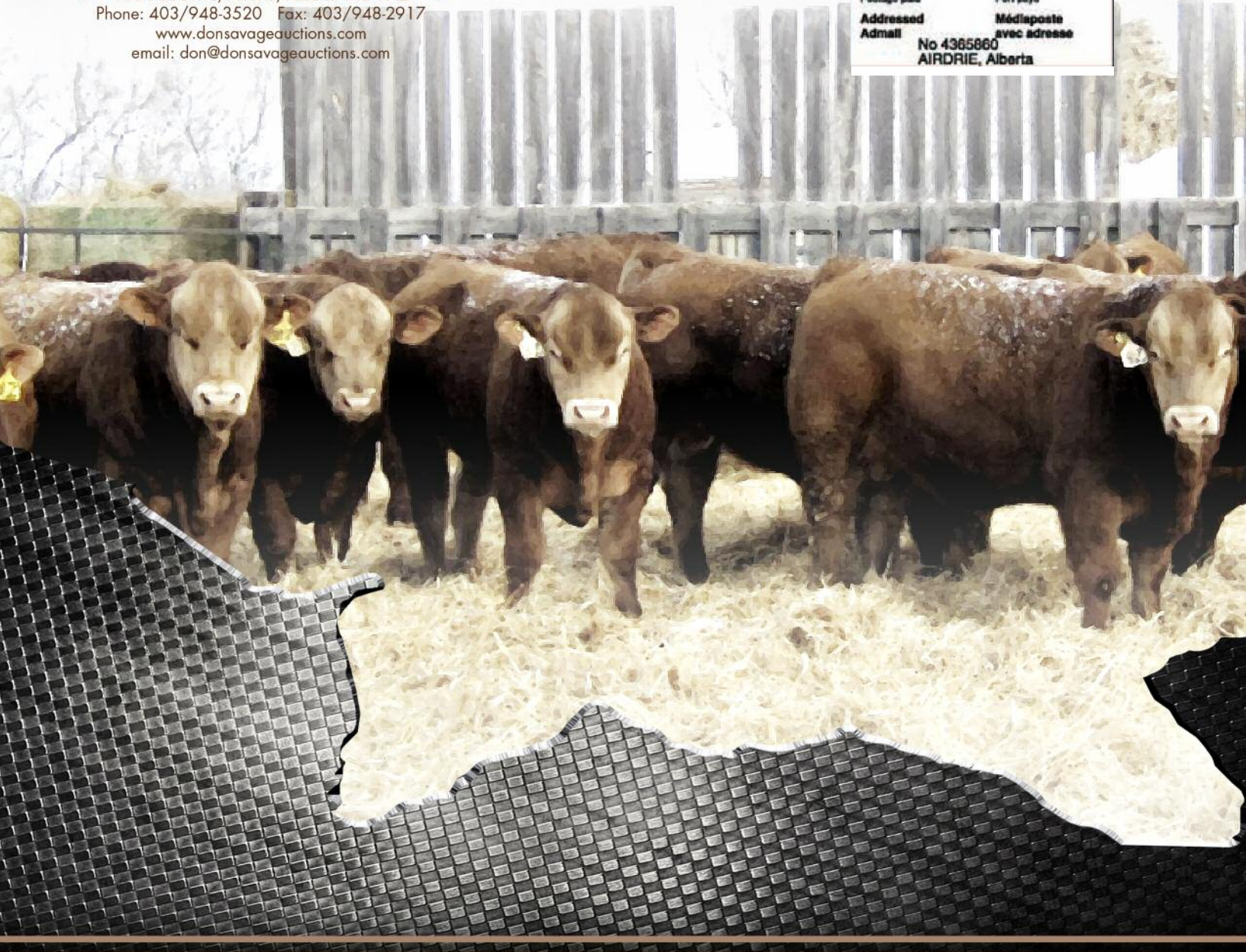
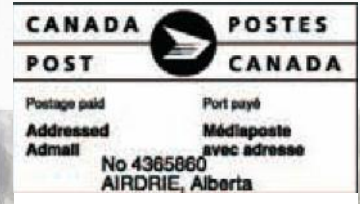
| | |
|-------------------------------------|----------------|
| Masterfeeds- Regina | 1.877.440.2727 |
| Masterfeeds - Saskatoon West | 1.306.384.2144 |
| Masterfeeds - Humbolt | 1.306.682.2668 |

BULL BREEDING GUARANTEE

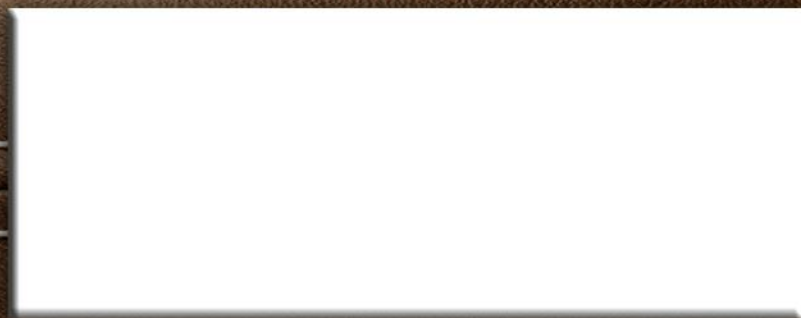
- All guarantees are between the buyer and the seller.
- All bulls offered and sold, except calves at side, are guaranteed breeders irrespective of age. All bulls after reaching the age of 15 months must be capable of settling 7 head or 75% of the eligible normal healthy breeding age females he is running with for a 90 day period, whichever is the lesser.
- No guarantee regarding the freezing ability of a bull's semen is made or implied in the sale of a bull unless covered specifically in a written contract.
- In the case of a complaint regarding a bull's breeding guarantee the buyer wishes to enforce the provisions of the Code shall report the same in writing to the seller enclosing a report prepared by a licensed veterinarian within 6 months of purchase or the time the bull reaches the age of 15 months whichever occurs later. The bull shall be returned to the seller at the buyer's expense. The seller may replace the bull with a bull of equal quality or refund the purchaser's price of the bull or he may attempt to prove the bull a breeder under the terms of this clause within 6 months. If the bull is proven to be a breeder within the 6 months provided he shall be returned by the seller to the buyer and the buyer's expense. If he is not proven to be a breeder then replacement or at the option of a seller a refund is mandatory. Under no circumstances will a seller be liable for more than the purchase price of the animal sold.



108 Flett Drive, Airdrie, Alberta T4B 1N2
Phone: 403/948-3520 Fax: 403/948-2917
www.donsavageauctions.com
email: don@donsavageauctions.com



Time Sensitive Material



www.gelbviehworld.com